



Charles Darwin Community
Primary School
Safeguarding Procedures

At Charles Darwin Community Primary School we are committed to promoting the safeguarding and welfare of our children.

The information below summarises what we do in order to keep children safe.

CDCPS Safeguarding – Key Personnel

Whole school Designated Safeguarding Lead: Mrs Marianne Bennett

head@charlesdarwin.cheshire.sch.uk

Deputy Designated Lead:

Mrs Sharon Ronald

deputy@charlesdarwin.cheshire.sch.uk

Jo Tilley and Kelly Newport also play key roles in whole school safeguarding

CDCPS School Governor with responsibility for safeguarding: Mrs Jenny Foulkes

jfoulkes@charlesdarwin.cheshire.sch.uk

Chair of Governors at CDCPS:

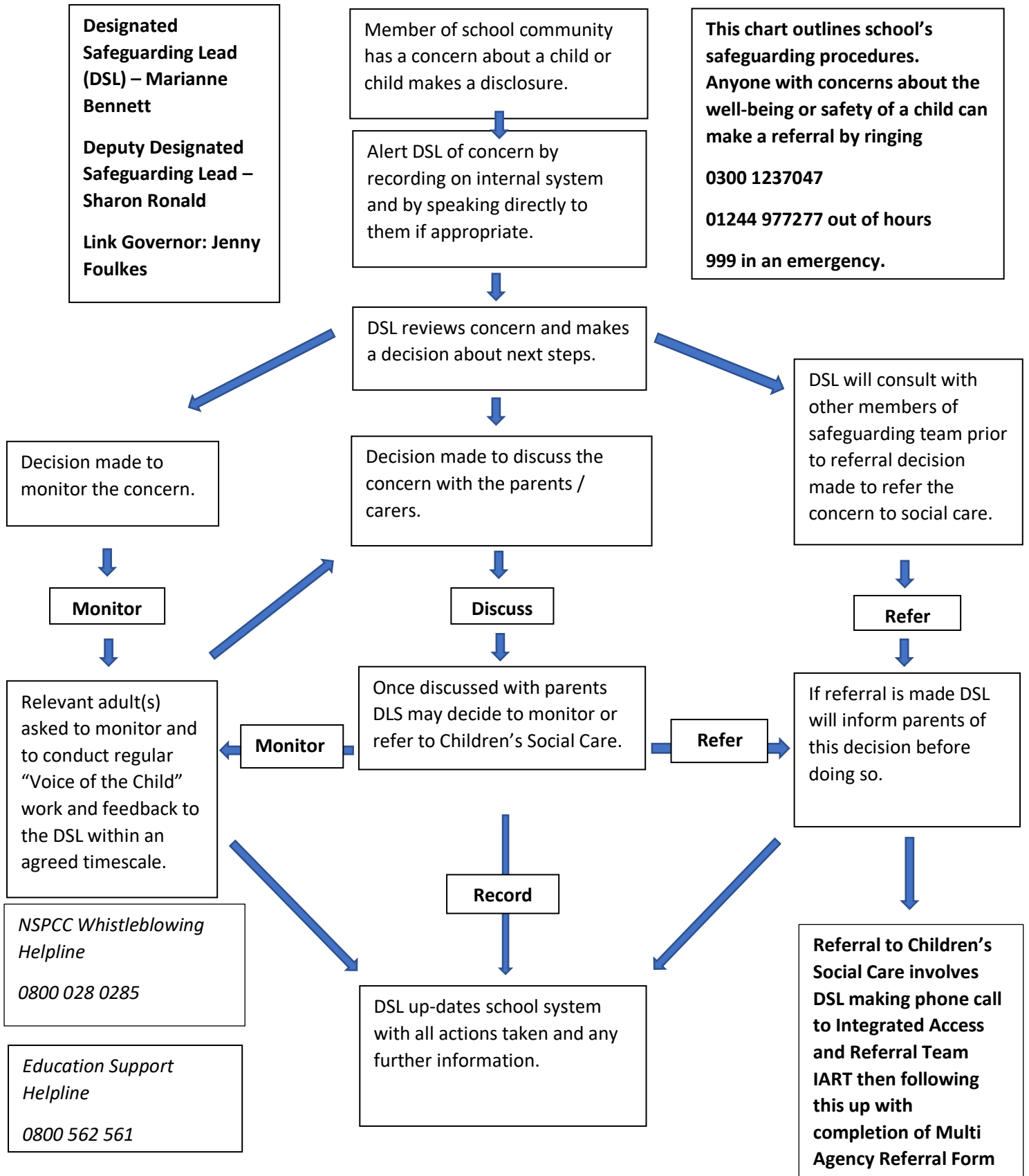
Mrs Alison Massey

chair@charlesdarwin.cheshire.sch.uk

Where an allegation/concern has been raised regarding a member of staff or volunteer.

A member of the school safeguarding team will consult the SCIE team and make a referral to the Local Authority Designated Officer (LADO), informing the school's HR representative where the concern is regarding a member of staff.

FLOW CHART ILLUSTRATING ACTIONS AND DECISIONS IF A SAFEGUARDING CONCERNS IS RAISED



This chart outlines school's safeguarding procedures. Anyone with concerns about the well-being or safety of a child can make a referral by ringing **0300 1237047** **01244 977277** out of hours **999** in an emergency.

- The IART aspect of CSC will make decision whether to:
- instigate an initial, social worker led assessment which must be completed within 45 days
 - recommend a TAF (Team Around the Family) which could be led by school or other professional agencies
 - take no further action